



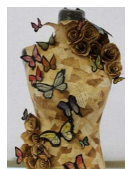
Externally Set Assignment:

Me and My World: Student led investigations

Me and My World: Objects and Still life

YEAR 11

Mock Exam: Observational work.

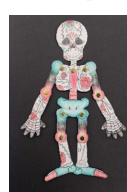


YEAR 10

Teacher led 3D unit: Wearable Art

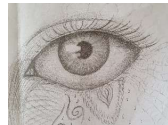
Student led 3D unit: Wearable Art

Pathways: Students find out how skills from art are transferred to their GCSEs and future employment.



Conceptual Development: Students explore their own concepts relating to identity using their investigations.

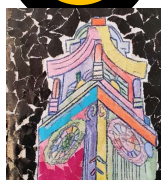
Observation: Looking at how artists explore identity through portraiture and culture through Day of the Dead.



YEAR 9

End of year exhibition:

Exploration: Students explore a range of artists, ideas and techniques relating to identity.



Develop ideas:

Students develop an individual artwork based on their genre investigations.

Learning about Genre:

Students develop their visual literacy and build skills by exploring each genre discreetly.



Learning about Genre:

Students are able to identify the genre of historical and contemporary art.

Composition:

Learning how to apply the formal elements throughout a project and in a final piece

End of year exhibition:

This may take the form of displays, videos, community exhibitions or sharing work on social media.

YEAR 8

Formal Elements:

Learning about each of the formal elements, how to explore these using visual literacy and how artists use them.



Baseline assessment:

bridging the gap between KS2 and KS3

YEAR 7



welcome

